



ASHA-PAC

American Speech-Language-Hearing Association

Political Action Committee



ASHA-PAC ANNUAL REPORT

2022



ASHA-PAC: YOUR VOICE ON CAPITOL HILL

ASHA-PAC is the political action committee (PAC) of the American Speech-Language-Hearing Association (ASHA), which supports members of Congress and congressional candidates who serve as champions on key issues benefiting the professions of audiology and speech-language pathology as well as persons with communication disorders.



Learn more at www.asha.org/pac

MESSAGE FROM THE 2022 ASHA-PAC CHAIR

I'm pleased to present ASHA-PAC's 2022 Annual Report, which provides an overview of the collaborative effort put forth to ensure the future of our professions and those we serve. Through your engagement with ASHA-PAC and ASHA's grassroots advocacy, we were able to support candidates for the U.S. House and Senate who recognize the importance of audiology and speech-language pathology services and support ASHA's public policy priorities.

It has been an honor to serve as the ASHA-PAC Chair this past year. My time on the ASHA-PAC Board of Directors has been an amazing experience. I have had the opportunity to see a community of professionals come together and partner with staff to bring forward our top legislative priorities—as defined in ASHA's Public Policy Agenda—to the Hill.

I am proud that, collectively, we have increased the understanding and appreciation for the services we provide with members of Congress. I am thrilled that we gained additional support for issues important to audiologists and SLPs and achieved important victories, such as:

- Renewing the federal law supporting newborn hearing screening programs;
- Increasing funding for the Individuals with Disabilities Education Act;
- Reducing Medicare payment cuts;
- Extending Medicare telehealth authority;
- Creating a program to provide opportunities to students from underrepresented and disadvantaged backgrounds to become audiologists and SLPs; and
- Recognizing that the Department of Education should provide technical assistance to help audiologists and SLPs better support students with speech-language disorders in school settings.

ASHA-PAC would not be strong or effective without the generous donations from you, the membership of ASHA. Every dollar goes towards congressional candidates who support issues that matter most. ASHA attended over 41 candidate events and made contributions to 39 members of the House and Senate this past year. With your continued investment in ASHA-PAC, we will be better positioned to promote policies that advance our professions and build meaningful relationships so that members of Congress are turning to ASHA as a trusted resource when guidance is needed on issues important to us.

As we look to 2023, ASHA-PAC wishes all our ASHA colleagues and the people we serve a productive and healthy year.

Warmest Regards,



2022 ASHA-PAC BOARD OF DIRECTORS

DAVID ALEXANDER, CHAIR

SAMANTHA J. KLEINDIENST, PAST-CHAIR

DEBORAH ROSS SWAIN, BOARD LIAISON

VICKI DEAL-WILLIAMS, TREASURER

JOHN J. WHICKER, MEMBER

SHARI B. ROBERTSON, MEMBER

FARRAH RIZWI, EARLY CAREER PROFESSIONAL MEMBER

LIZ BEST-BRADFORD, EX OFFICIO

THE ASHA-PAC BOARD IS CHARGED WITH:

- Raising funds to influence the nomination or election of individuals who will promote the interests and needs of audiologists, SLPs, and people with disabilities
- Educating audiologists and SLPs on government procedures and the public issues, that affect the professions and those we serve
- Facilitating the participation of audiologists and SLPs in the political process; and
- Promoting public policies that result in accessible and appropriate services in education and health care settings, in training qualified personnel to deliver services, and research that benefits those with communication disorders.



Find out more: www.asha.org/about/governance/committees/committees/political-action-committee/

ASHA-PACSTATS



\$242,518

RAISED



7,932

DONORS



OF ASHA-PAC
SUPPORTED
CANDIDATES
WON
RE-ELECTION

117 Wins / 5 Losses

\$78,000

DISBURSED

\$55,000 to Democrats
\$23,000 to Republicans

HIGH LEVEL DONORS:



5

CHAMPION'S
CIRCLE

8

DIAMOND
CIRCLE

13

PLATINUM
CIRCLE



GOLD
CIRCLE **93**

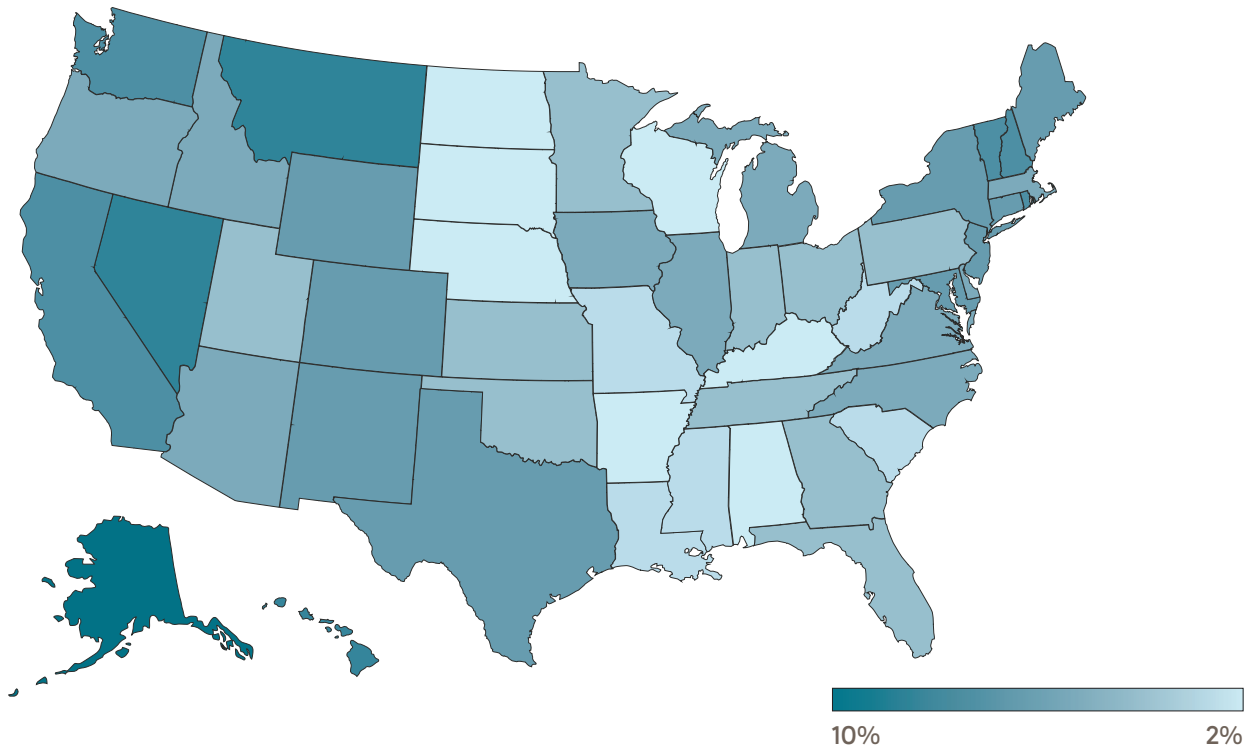
ATTENDED OVER
41 FUNDRAISERS

31 HOUSE | 19 REPUBLICANS
10 SENATE | 22 DEMOCRATS

DISBURSED TO
39 MEMBERS

32 HOUSE | 20 REPUBLICANS
9 SENATE | 21 DEMOCRATS

2022 PAC DONORS BY STATE & U.S. TERRITORIES



The map illustrates the actual number of donors for each state compared to the number of eligible donors. For example, in Alaska 10.8% contributed out of the 425 eligible donors. The US territories are listed in the table that complements the map.

State	Donor Count	Current Eligible Donor Count	% Eligible Donors
AE	6	161	3.73%
AK	46	425	10.82%
AL	60	2,461	2.44%
AP	4	82	4.88%
AR	59	2,778	2.12%
AZ	126	3,299	3.82%
CA	851	15,442	5.51%
CO	177	4,041	4.38%
CT	134	2,757	4.86%
DC	23	402	5.72%
DE	20	538	3.72%
FL	360	11,375	3.16%
GA	172	5,219	3.30%
GU	4	37	10.81%
HI	43	535	8.04%
IA	59	1,509	3.91%
ID	34	972	3.50%
IL	327	9,219	3.55%
IN	116	3,662	3.17%

State	Donor Count	Current Eligible Donor Count	% Eligible Donors
KS	64	1,953	3.28%
KY	72	2,888	2.49%
LA	84	3,125	2.69%
MA	207	5,360	3.86%
MD	166	3,801	4.37%
ME	37	919	4.03%
MI	214	5,499	3.89%
MN	108	3,396	3.18%
MO	120	4,203	2.86%
MS	53	1,838	2.88%
MT	38	591	6.43%
NC	235	6,450	3.64%
ND	13	585	2.22%
NE	35	1,450	2.41%
NH	52	1,004	5.18%
NJ	326	7,581	4.30%
NM	61	1,317	4.63%
NV	59	965	6.11%
NY	822	17,962	4.58%

State	Donor Count	Current Eligible Donor Count	% Eligible Donors
OH	225	7,265	3.10%
OK	76	2,435	3.12%
OR	79	2,128	3.71%
PA	279	8,785	3.18%
PR	11	427	2.58%
RI	42	733	5.73%
SC	80	3,071	2.61%
SD	12	544	2.21%
TN	129	3,787	3.41%
TX	674	15,609	4.32%
UT	55	1,645	3.34%
VA	173	4,462	3.88%
VT	30	507	5.92%
WA	203	3,632	5.59%
WI	88	3,744	2.35%
WV	26	1,039	2.50%
WY	17	384	4.43%
Total	7,586	195,998	3.87%

2022 ASHA ADVOCACY YEAR IN REVIEW



ADVOCACY OUTREACH

Prepared and submitted 115 advocacy letters in 2022 to federal and state policymakers

115

 ADVOCACY LETTERS IN 2022

TELEPRACTICE COVERAGE

- Audiologists and SLPs are now able to provide telehealth services under Medicare through Dec. 31, 2024
- Added **13** key audiology and speech-language pathology services to the AMA's list of CPT codes for telepractice billing
- New telepractice rules in more than **35 states** that better incorporate the full scope of practice of audiologists and SLPs



PROFESSIONAL PRACTICES

- Developed model legislation and regulations with the American Music Therapy Association to address collaboration between music therapists and SLPs
- Expanded advocacy in workers compensation and disability determinations for many federal programs by successfully nominating an audiology member to the Editorial Panel of the AMA Guides to the Evaluation of Permanent Impairment
- Collected member data regarding the impact of telehealth coverage and payment reductions via surveys to use in ASHA advocacy with policymakers.

DIVERSITY, EQUITY, INCLUSION

- The **Allied Health Workforce Diversity Act's** key provision was signed into law requiring federal resources to provide opportunities for and expand the diversity of future audiologists and SLPs
- **Early Hearing Detection and Intervention Act** was signed into law to renew federal support for state-based hearing screening programs and require GAO to research access to timely hearing screening and intervention services for underserved populations



FEDERAL FUNDING

Succeeded in securing increased FY 2023 appropriations funding including an additional:

\$1 BILLION

for IDEA

(Individuals with Disabilities Education Act)

\$1 MILLION

for EHDI

(Early Hearing Detection and Intervention Act)

\$19.5 MILLION

for NIDCD

(National Institute on Deafness and Other Communication Disorders)

SERVICES AND PAYMENT

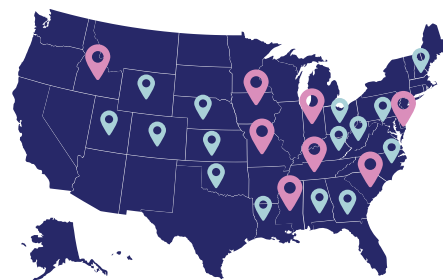
- Reduced scheduled Medicare Part B payment cuts by over half for 2023
- Mitigated the impact of Medicare payment reductions in SNFs and home health
- Eliminated the physician order requirement for certain nonacute hearing assessment services under Medicare

INTERSTATE COMPACT (ASLP-IC)

8 STATES

 ADDED

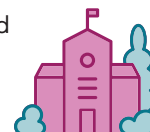
increasing the total number to **23 STATES**



Delaware, Idaho, Indiana, Iowa, Mississippi, Missouri, South Carolina, and Tennessee

SCHOOLS

Successfully advocated for the passage of legislation that:



- requires clearer guidance from CMS to facilitate school-based Medicaid billing
- provides **\$8 million** for the development of a technical assistance center to implement best practices to make it easier for schools and families to access high quality school-based Medicaid services
- provides **\$50 million** in state grants to expand assistance to school-based entities under Medicaid or CHIP
- encourages the U.S. Department of Education to provide technical assistance to help audiologists and SLPs better support students with speech-language disorders in school settings

2022 ASHA-PAC CONTRIBUTORS

(September 1, 2021 - August 31, 2022)



ASHA-PAC CHAMPION'S CIRCLE LEVEL (\$1,000+)

Debra Beckman, CCC-SLP
Liz Best-Bradford
Mary Doohar, CCC-SLP

Jerry White
A. Lynn Williams, CCC-SLP

ASHA-PAC DIAMOND CIRCLE LEVEL (\$500 - \$999)

David Alexander, CCC-A
Sucheta Kamath, CCC-SLP
Nancy Kuhles, CCC-SLP
Nancy Lovering, CCC-SLP

Jeffrey Regan
Judy Rich, CCC-SLP
Molly Thompson, CCC-SLP

ASHA-PAC PLATINUM CIRCLE LEVEL (\$250 - \$499)

Jillian Barrett, CCC-A
Carol Fleming, CCC-SLP
Marian Lowther, CCC-SLP
Eric Masten
Valeria Matlock, CCC-A
Ann McMahon, CCC-A

Ardell Olson, CCC-A
Doreen Oyadomari, CCC-SLP
Shari Robertson, CCC-SLP
Donna Smiley, CCC-A
Janice Trent, CCC-A
Elizabeth Walker, CCC-A/SLP

Photos from the
2022 ASHA-PAC
Reception at the
ASHA Convention



ASHA-PAC GOLD CIRCLE LEVEL (\$100 - \$249)

Robert Augustine, CCC-SLP
Brian Bemis, CCC-SLP
Deborah Bennett, CCC-SLP
Jean Blosser, CCC-SLP
Patricia Boling, NOCCC
Aliya Boone, CCC-SLP
Doris Bradley, CCC-SLP (Ret)
Adrienne Bratcher, CCC-SLP
Martin Brodsky, CCC-SLP
Janet Brown, CCC-SLP (Ret)
Angela Carey-Adams, CCC-SLP
Arlene Carney, CCC-A
Joan Cashin, CCC-SLP (Ret)
Pamela Christianson, CCC-SLP
Edgar Clark, CCC-SLP
Elizabeth Davis, CCC-SLP
Michelle Dawson, CCC-SLP
Janet Deppe, CCC-SLP
Angela Devaney, CCC-SLP
Allan Diefendorf, CCC-A
Monica Ferguson, CCC-SLP
Robert Fifer, CCC-A
Susie Ford, CCC-SLP
Alexander Francis, NOCCC
Christine Freiberg, CCC-SLP
Dana Fritz, CCC-SLP
Elizabeth Frost, CCC-SLP
Paulette Gentry, CCC-SLP
Virginia Geoffrey, CCC-SLP (Ret)
Howard Goldstein, CCC-SLP
Kayla Gollither, CCC-A
Barbara Goodson, CCC-SLP
Catherine Gottfred, CCC-SLP
Elizabeth Griffin, CCC-SLP
Brooke Hallowell, CCC-SLP

Stephanie Hammond, CCC-SLP
James Hankla, CCC-A
Meredith Harold, CCC-SLP
Tamara Harrison, CCC-SLP
Maria Hase, CCC-SLP
Brenda Hoffmann, CCC-SLP
Amy Hogue, CCC-SLP
Raymond Hull, CCC-A/SLP
Annette Hurley, CCC-A
Carolyn Isakson, CCC-SLP (Ret)
Melissa Jakubowitz, CCC-SLP
Jeanene Johnson, CCC-SLP
Iris Johnson Arnold, CCC-SLP
Sandra Joint, CCC-SLP
Rebecca Khayum, CCC-SLP
Janet Koehnke, CCC-A
Catherine Lavigne, CCC-SLP
Orpha Jill Lawrence, CCC-SLP
Cara Leckwold, CCC-SLP
Alison Lemke, CCC-SLP
Rebecca Leonard, CCC-SLP
Louis Malerba, CCC-SLP
Julie Malone, CCC-SLP
Ann Mayfield-Clarke, CCC-SLP
Elizabeth McKerlie, CCC-SLP
Malcolm McMillen, CCC-SLP (Ret)
Tena McNamara, CCC-A/SLP
Lemmieta McNeilly, CCC-SLP
Karen McQuaide, CCC-A
Jon Miller, CCC-SLP
Marcus Neal, CCC-SLP
Dee Adams Nikjeh, CCC-SLP
Angela Perkins, CCC-SLP
Lara Phinney, CCC-SLP
Lissa Power-deFur, CCC-SLP
Paul Rao, NOCCC
Kelly Reavis, CCC-A
Gail Richard, CCC-SLP
Farrah Rizwi, CCC-SLP

Samantha Robler, CCC-A
Vanessa Roderick, CCC-SLP
Theresa Rodgers, CCC-SLP
MaryAnn Ronski, CCC-SLP
Diane Ross, CCC-SLP
Jane Schulman, CCC-SLP
Amy Schwarz, CCC-SLP
Elizabeth Schwimer Morrissey, CCC-SLP
Esmeralda Sifuentes, CCC-SLP
Joanna Skogman, CCC-SLP
Cynthia Smith, CCC-SLP
Lyssa Smock, CCC-SLP
Lizbeth Stevens, CCC-SLP
Nancy Swigert, CCC-SLP
Jaime A Y Van Echo, CCC-SLP
Carol Venus, CCC-SLP
Anne Ver Hoef, CCC-SLP
John Weigand, CCC-A
Timothy Weise, CCC-SLP
Charlene Westman, CCC-SLP



CAPITOL CIRCLE LEVEL (\$50 - \$99)

Laura Agyeman, CCC-SLP
Lois Allen, CCC-SLP
Constance Allen, CCC-SLP
Sonia Aller, CCC-SLP
Gregg Altobella, CCC-SLP
Dora Alvarez, CCC-SLP
Linda Anders, CCC-SLP
Noma Anderson, CCC-SLP (Ret)
Barbara Jean Anderson, CCC-SLP
Cynthia Atcheson, CCC-SLP
Martin Audiffred, CCC-A
Margaret Avallone, CCC-SLP
Edna Babbitt, CCC-SLP
Audrey Baker, CCC-SLP
Paula Baker, CCC-SLP
Robert Baker, CCC-SLP
Kathryn Ballance, CCC-SLP
Kristiana Barbarevech, CCC-A
Julie Barkmeier-Kraemer, CCC-SLP
Susan Barnett, CCC-SLP
Wendy Barrick, CCC-SLP
Meghan Barry, CCC-SLP
Natalie Benafield, CCC-A
Joan Besing, CCC-A
Julie Bisbee, CCC-SLP
Cecelia Bistner, CCC-SLP (Ret)
Steven Blaustein, CCC-SLP
Frances Block, CCC-SLP
Jeri Weinstein Blum, CCC-SLP
Katheryn Boada, CCC-SLP
Tara Boettcher, CCC-SLP
Ellen Bonk, CCC-SLP
Sinetra Bowdry, CCC-SLP
Ingrid Bowling, CCC-SLP
Arnell Brady, CCC-SLP
Jeremy Braun, CCC-SLP
Linda Brown, CCC-SLP
Carrie Bryson, CCC-SLP
Erin Buckwalter, CCC-SLP
Caryn Burstein, CCC-SLP
Angela Campanelli, CCC-SLP
Kathleen Campbell, NOCCC
Terry Carlson, CCC-SLP
Daniel Carpenedo, CCC-SLP
Susan Carroll, CCC-SLP
Nichole Carubia, CCC-SLP
Michelle Casteel, CCC-SLP
Dorothy Celebre, CCC-SLP
Robin Chapman, CCC-SLP
Kristin Childs, CCC-SLP
Jessica Chizen, CCC-SLP
Jane Cho, CCC-SLP
Jaumeiko Coleman, CCC-SLP

Craig Edward Coleman, CCC-SLP
Lori Colletti, CCC-SLP
Alexandria Colonna, CCC-A
Barbara Cone, CCC-A
Kathryn Connaghan, CCC-SLP
Karen Prescott Copeland, CCC-SLP
Karen Copple, CCC-SLP
Micaela Cornis-Pop, CCC-SLP
Diana Corona, CCC-SLP
Tara Courville, CCC-SLP
Elizabeth Crais, CCC-SLP
Nancy Creaghead, CCC-SLP
Brooke Crenshaw, CCC-SLP
Kimberly Croteau-Sparks, CCC-A
Brynn Dacher, CCC-SLP
Michele Dacy-Nichols, CCC-SLP
Janet Daddario, CCC-SLP
Laura Dahlem, CCC-SLP
Brenda Davis, CCC-SLP
Elise Davis-McFarland, CCC-SLP
Kristin Dilaj, CCC-A
Joelle Dolas, CCC-SLP
Lizbeth Dooley-Zawacki, CCC-SLP
Carmen Duncan, CCC-SLP
Kristin Dunn, CCC-SLP
Kimberly Dzikowski, CCC-A
Betsy EagerKessel, CCC-SLP
Joan Eberhardt Snider, CCC-SLP
Kimberly Edmonds, CCC-SLP
Jane Edscorn, CCC-SLP
Ann Elliott, CCC-SLP
Linda Ellis, CCC-SLP (Ret)
Alida Engel, CCC-SLP
Otis Enoch, CCC-SLP
Laura Epstein, CCC-SLP
Donna Eskwitt, CCC-A
Abby Eubank, CCC-SLP
Christine Eubanks, CCC-A
Linda Fawx, CCC-SLP
Debbie Floren, CCC-SLP
Perry Flynn, CCC-SLP

Marjorie Foer, CCC-SLP
Beryl Fogel, CCC-SLP
Peggy Frank, CCC-A
Jane Frobose, CCC-SLP
Kathy Gates, CCC-A
Lisa Geary-Espina, CCC-SLP
Cindy Gerbitz-Hattem, CCC-SLP
Linda Goodman, CCC-SLP
Marie Gowen, CCC-SLP
Theresa Grant, CCC-A/SLP
Candice Hackbarth, CCC-SLP
Patti Haight-Howard, CCC-SLP
Antoinette Hamidian, CCC-SLP
Jaynee Handelsman, CCC-A
Valerie Hannah, CCC-SLP
Rajendraswamy Heggawadi, CCC-SLP
Nancy Higbee, CCC-SLP (Ret)
Laura Hillier, CCC-SLP
Carol Hofbauer, CCC-SLP
Flora Holderbaum, CCC-A
Christi Holt, CCC-SLP
Julie Honaker, CCC-A
Jillian Hubertz, CCC-A
Melanie Hudson, CCC-SLP
Victoria Huff, CCC-SLP (Ret)
Carolyn Hughes-Fenchel, CCC-SLP
Jacqueline Jaber, CCC-SLP
Barbara Jacobson, CCC-SLP
Shannon Jacobson, CCC-SLP
Clarissa Jernigan, CCC-SLP (Ret)
Kia Johnson, CCC-SLP
Sharon Johnson, CCC-SLP
Karen Johnson, CCC-SLP
Jennifer Jourdain, CCC-SLP
Rochelle Kane, CCC-SLP
Amy Kantor Bergen, CCC-SLP
Jennifer Katzen, CCC-SLP
Patricia Keeler, CCC-SLP
Alexandra Keenan, CCC-A
Nan Kennelly, CCC-SLP
Raymond Kent, NOCCC





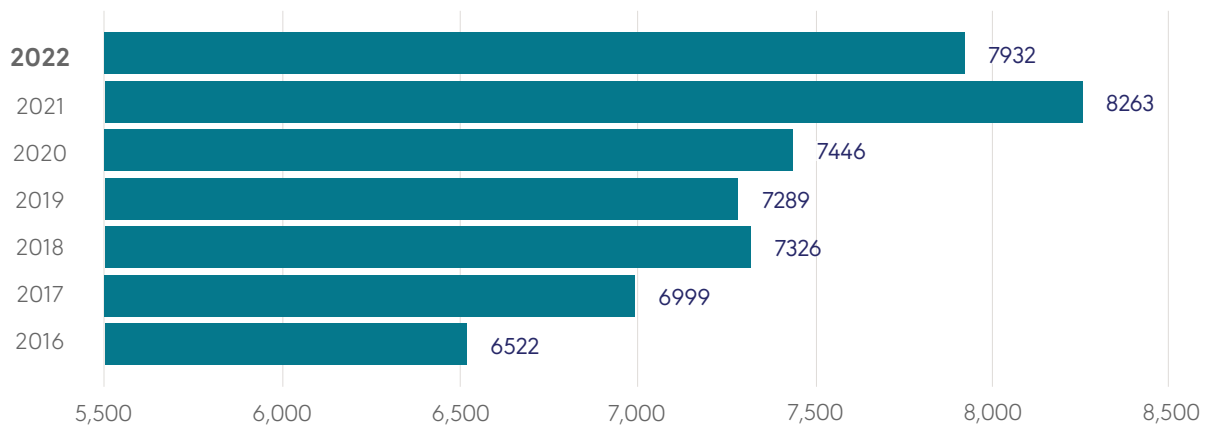
Susan Kimmerly, CCC-SLP
 Lisa Knudsen Porte, CCC-SLP
 Renee Koffend, CCC-A
 Angela Korpela, CCC-SLP
 Rosina Kotacska, CCC-SLP
 Robynne Kratchman, CCC-SLP
 Sue Ellen Krause, CCC-SLP
 Cassandra Krenz, CCC-SLP
 Chih-Yung Kuo, CCC-A
 Jennifer Anne Lane Lehr, CCC-SLP
 Ann Lehn, CCC-SLP
 James Lemma, CCC-SLP
 Adria Leno, CCC-SLP
 Nichole Lessard, CCC-SLP
 Risa Levine, CCC-SLP
 Michele Linares, CCC-SLP
 Janice Lindsey, CCC-SLP
 Michael Lindsey, CCC-SLP
 Rachel Lingnau, CCC-A
 Dimitra Loomos, CCC-A
 Norma Lopez-Rivera, CCC-SLP
 Jay Lubinsky, CCC-A/SLP
 Edwin Maas, NOCCC
 Paula MacDougall-Pauly, CCC-SLP
 Gwen Mace Walker, CCC-SLP (Ret)
 Linda Mann, CCC-SLP
 Kristen Mantle, CCC-SLP
 Kathryn Marflak, CCC-SLP
 Mary Markley, CCC-SLP
 Helen May, CCC-SLP (Ret)
 Maureen McKeown, CCC-SLP
 Britt McManus, CCC-SLP
 Larry Medwetsky, CCC-A
 Jeffrey Meeks, CCC-SLP
 Joan Mele-McCarthy, CCC-SLP
 Marie Menza, CCC-SLP
 Mara Meyer, CCC-SLP
 Maria Meza, CCC-SLP
 Lisa Miller, CCC-SLP
 Joyce Mills, CCC-SLP (Ret)
 Paula Mims, CCC-SLP
 Nancy Minghetti, CCC-SLP
 Mardell Moeller Granger, CCC-SLP
 Erin Montgomery, CCC-SLP
 Chasity Moore, CCC-A

Lindee Morgan, CCC-SLP
 Claudia Mornout, CCC-SLP
 Vicki Mucci, CCC-SLP
 Stephanie Munoz, CCC-SLP
 Carol Noe Cheney, CCC-SLP
 Jessica Norton, CCC-SLP
 Margaret Novotny, CCC-SLP
 Dorothy Olson, NOCCC
 David Olson, CCC-SLP
 Robert Owens, CCC-SLP
 Licia Paskay, CCC-SLP
 Lynn Paul, CCC-SLP
 Elizabeth Pauw, CCC-SLP
 Cristina Perez, CCC-SLP
 Laura Peterson, CCC-SLP
 Elena Plante, CCC-SLP
 Anka Popovich-Krstic, CCC-SLP
 Ann Potter-Manion, CCC-SLP
 Patricia Prelock, CCC-SLP
 Lisa Price, CCC-SLP
 Vickie Pullins, CCC-SLP
 Patricia Quillin-Martinez, CCC-SLP
 Adele Raade, CCC-SLP
 Susan Rakness, CCC-SLP
 Kathleen Rasmussen, CCC-SLP (Ret)
 William Reagan, CCC-SLP
 Sandra Reams, CCC-A
 Angela Reinke, CCC-SLP
 Noe Reyes, CCC-SLP
 Mary Reynolds, CCC-SLP
 Patricia Richardson, CCC-SLP
 Jill Richey, CCC-SLP
 Marianne Rivers, CCC-SLP
 Patricia Robinson, CCC-SLP
 Tommie Robinson, CCC-SLP
 Amy Rodda, CCC-SLP
 Kathleen Roeder, CCC-SLP
 Patricia Rom, CCC-SLP
 Jason Rosas, CCC-SLP
 Jamie Ross, CCC-A
 Susan Sabia, CCC-SLP
 Tricia Sagnella, CCC-SLP
 Kimberly Salmon, CCC-SLP
 Barbara Samfield, CCC-SLP
 Johnny Sanders, CCC-A

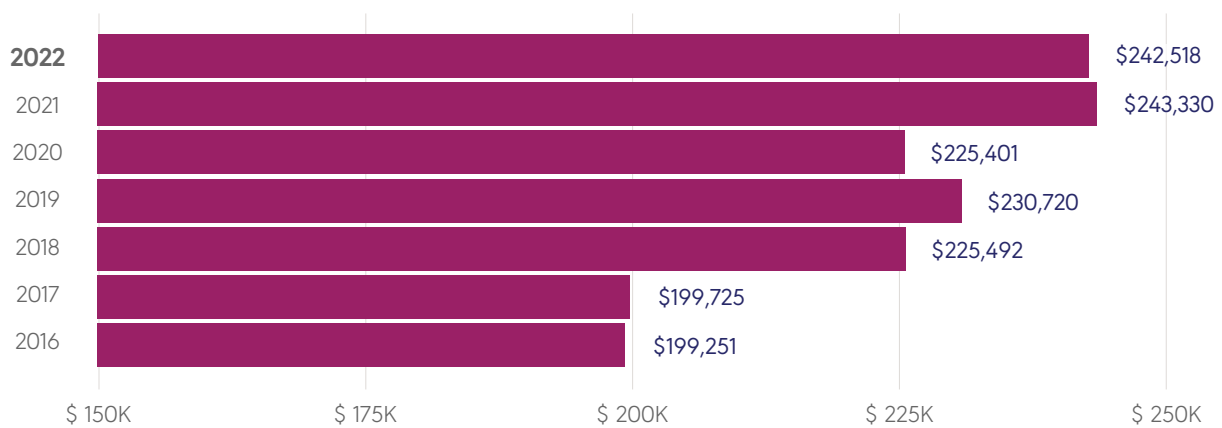
Philip Schnipper, CCC-SLP
 Jan Sessions, CCC-SLP
 Suzanne Sharp, CCC-SLP
 Kyla Sherrard, CCC-SLP
 Lisa Shields, CCC-SLP
 Carol Shipton, CCC-SLP
 Bette Shore Rushfeldt, CCC-SLP
 Leland Simmons, CCC-SLP
 Bess Sirmon-Taylor, CCC-SLP
 Barbara Slocum, CCC-SLP
 Jonathan Smith, CCC-SLP
 Carla Smith, CCC-SLP
 Christine Sofie, CCC-A
 McKay Sohlberg, CCC-SLP
 Natalie Soueidan, CCC-SLP
 Carrie Spangler, CCC-A
 Greta Stamper, CCC-A
 Lucinda Stangl, CCC-SLP
 Alanna Steaple, CCC-SLP
 Donna Stewart, CCC-SLP
 Antoinette Stewart, CCC-SLP
 Eleanor Stiff, CCC-SLP
 Kristen Strong, CCC-SLP
 Karen Kicho Sufana, CCC-SLP
 Jessica Sullivan, NOCCC
 Cindy Susienka, CCC-SLP
 Mica Sylvester, CCC-SLP
 Deborah Tabasko, CCC-SLP
 Mieko Tanaka, CCC-A
 Tamara Taylor, CCC-SLP
 Jason Thomas, CCC-A
 Gynna Thompson, CCC-SLP
 Jennifer Thompson, CCC-SLP
 Michael Towey, CCC-SLP
 Patricia Trautwein, CCC-A
 Miriam Trisdale, CCC-SLP
 Kathleen Ulrich, CCC-A
 Adelia Van Meter, CCC-SLP
 Carmen Vega-Barachowitz, CCC-SLP
 Shelley Victor, CCC-SLP
 Kyle Wade, CCC-SLP
 Stephanie Walker, CCC-SLP
 Katherine Wallisch, CCC-SLP
 Doanne Ward-Williams, CCC-SLP
 Linda Watson, CCC-SLP
 Aurora Weaver, CCC-A
 Wanda Webb, CCC-SLP
 Catherine Weber, CCC-SLP
 Francine Wenhardt, CCC-SLP
 Lorrie Westerlund, CCC-SLP
 John Whicker, CCC-A
 Susan Carole Wirth, CCC-SLP
 Dorothea Wise, CCC-SLP
 Margaret Wochaski, CCC-SLP
 Norraine Wylonis, CCC-SLP
 Ann Zauberaman, CCC-SLP

2022 ASHA-PAC DONOR DATA

UNIQUE DONORS BY CAMPAIGN YEAR, 2016-2022



DONATION AMOUNT BY CAMPAIGN YEAR, 2016-2022

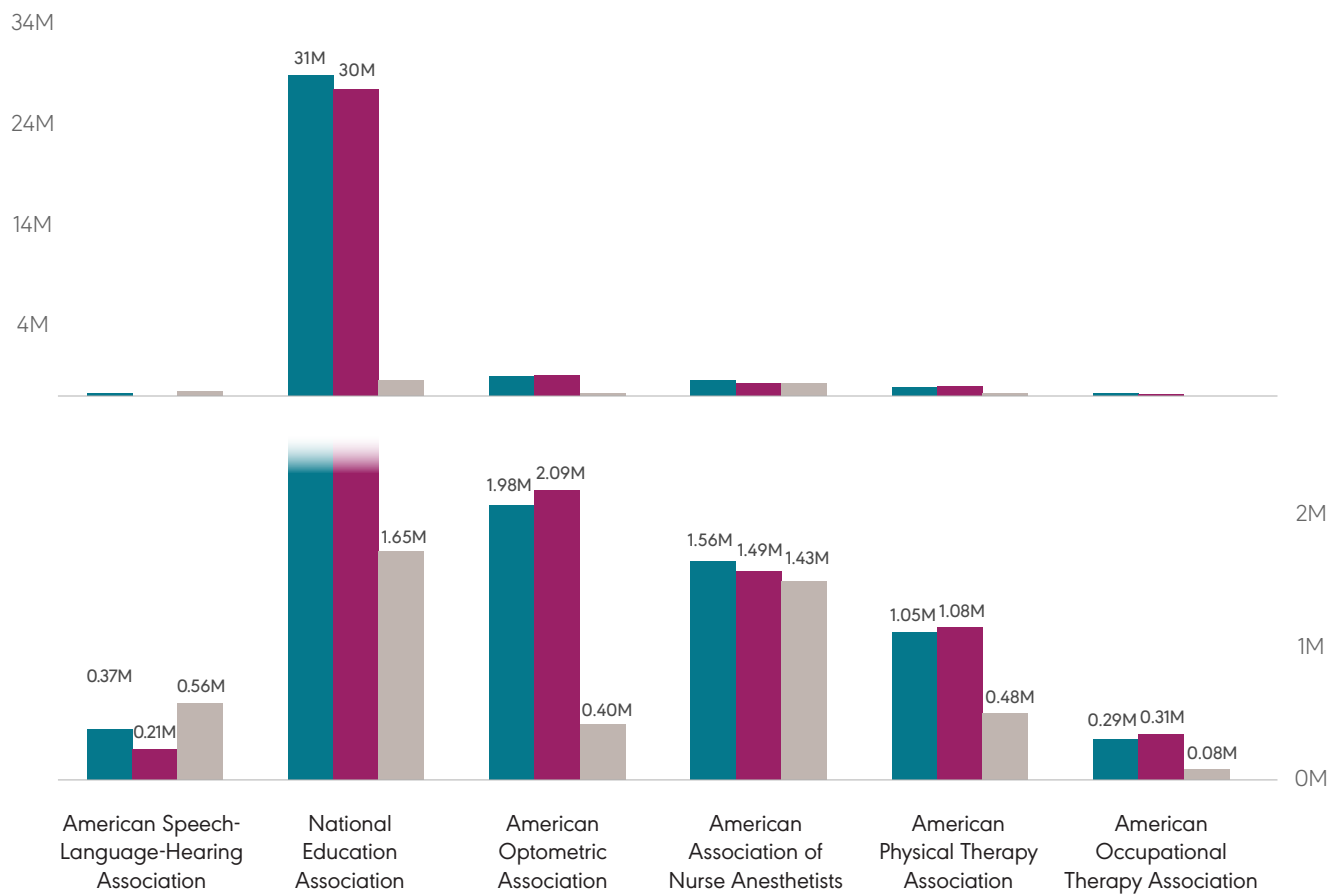




SPENDING RECORDS OF SELECT PACS AND SUPER PACS, 2022 SPENDING CYCLE

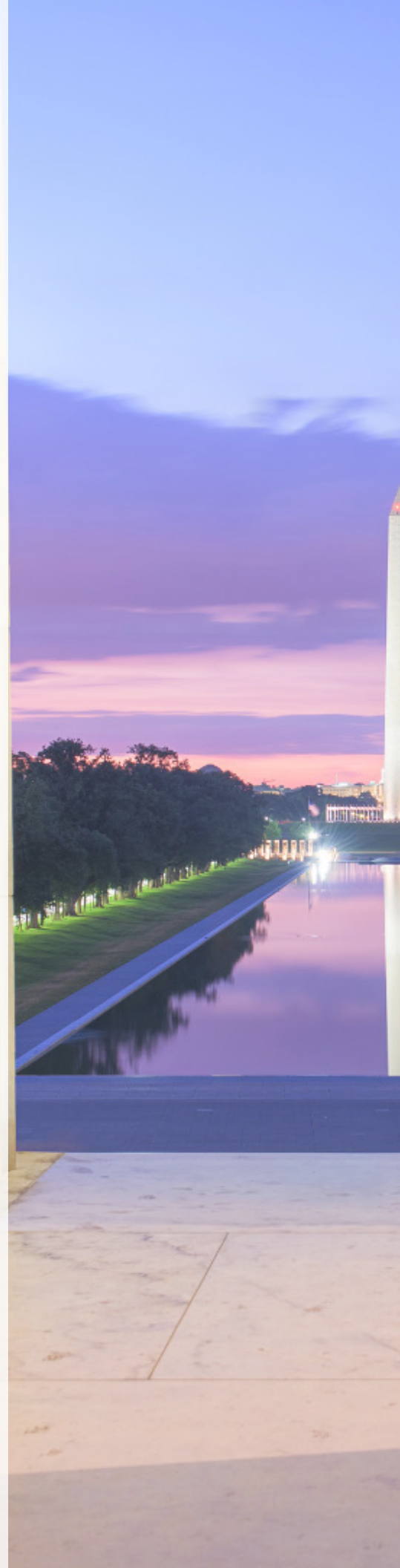
FEC DATA AS OF 11/28/22

■ Receipts ■ Disbursements ■ Ending cash on hand



2022 ASHA-PAC DISBURSEMENTS

AK	Sen. Lisa Murkowski (R)	MN	Rep. Pete Stauber (R)
CA	Rep. Anna Eshoo (D)	MN	Sen. Tina Smith (D)
CA	Rep. Doris Matsui (D)	MS	Sen. Cindy Hyde-Smith (R)
CA	Rep. Mike Thompson (D)	NE	Rep. Adrian Smith (R)
CA	Rep. Pete Aguilar (D)	NH	Sen. Maggie Hassan (D)
CO	Rep. Joe Neguse (D)	NJ	Rep. Frank Pallone (D)
CT	Rep. Joe Courtney (D)	NJ	Rep. Mikie Sherrill (D)
DE	Rep. Lisa Blunt Rochester (D)	OH	Rep. Bill Johnson (R)
FL	Rep. Gus Bilirakis (R)	OH	Rep. Bob Latta (R)
GA	Rep. Drew Ferguson (R)	OH	Sen. Sherrod Brown (D)
GA	Rep. Lucy Mcbath (D)	OK	Rep. Kevin Hern (R)
IA	Sen. Chuck Grassley (R)	OR	Sen. Ron Wyden (D)
IL	Rep. Jan Schakowsky (D)	OR	Rep. Suzanne Bonamici (D)
IL	Rep. Lauren Underwood (D)	PA	Rep. Brendan Boyle (D)
IL	Rep. Rodney Davis (R)	TX	Rep. Michael Burgess (R)
IN	Rep. Todd Young (R)	UT	Rep. John Curtis (R)
KY	Rep. Brett Guthrie (R)	WA	Rep. Cathy McMorris Rodgers (R)
MD	Rep. Steny Hoyer (D)	WA	Sen. Patty Murray (D)
ME	Sen. Susan Collins (R)	WA	Rep. Suzan Delbene (D)
MI	Rep. Tim Walberg (R)		





CANDIDATE CONTRIBUTION CRITERIA

ASHA-PAC supports candidates running for the United States Congress that recognize the importance of audiology and speech-language pathology services by providing contributions to their campaign, political or leadership committees. ASHA-PAC evaluates contribution requests based on the following guidelines:

PRIMARY CONSIDERATIONS

- The candidate's position and/or voting record on issues affecting speech-language pathologists, audiologists, and speech, language, and hearing scientists
- The integrity and character of a candidate
- The candidate's leadership or policy shaping position in his or her party
- The nature and strength of a candidate's viability in a given election

ADDITIONAL CONSIDERATIONS

- PAC member recommendations of candidates who reflect the ideals of ASHA-PAC
- ASHA member presence in a candidate's state/district
- Open seat candidates with a history of support for or direct connection to speech-language pathology and/or audiology
- Contributions to leadership PACs can be considered when the member of Congress is part of leadership or a relevant committee
- Contributions to national political party committees may be given

ASHA-PAC WILL NOT SUPPORT

- A candidate until they have formally declared their intent to seek political office
- Presidential campaigns
- Contributions that can be perceived as tied directly to a specific vote or party affiliation
- A government official's personal defense fund

ASHA-PAC: YOUR VOICE ON CAPITOL HILL

LEARN MORE

www.asha.org/pac

ASHA-PAC

444 North Capitol St, NW, Suite
715 Washington, DC 20001
202-624-5952
PAC@asha.org

Legal Disclaimer

Contributions to ASHA-PAC are not deductible for federal tax purposes. All contributions to ASHA-PAC are voluntary and you have a right to refuse without reprisal. The proposed contribution amounts are only suggestions and more or less may be given. The amount given by the contributor, or the refusal to give, will not benefit or disadvantage the person being solicited. Federal law requires ASHA-PAC to report the full name, address, occupation, and employer of individuals whose contributions exceed \$200 per year. Federal law prohibits corporate contributions.